

USB Contoured Keyboard™ Family

MPC™ technology -
The only Mac/PC
configurable keyboard



Advantage™ Pro

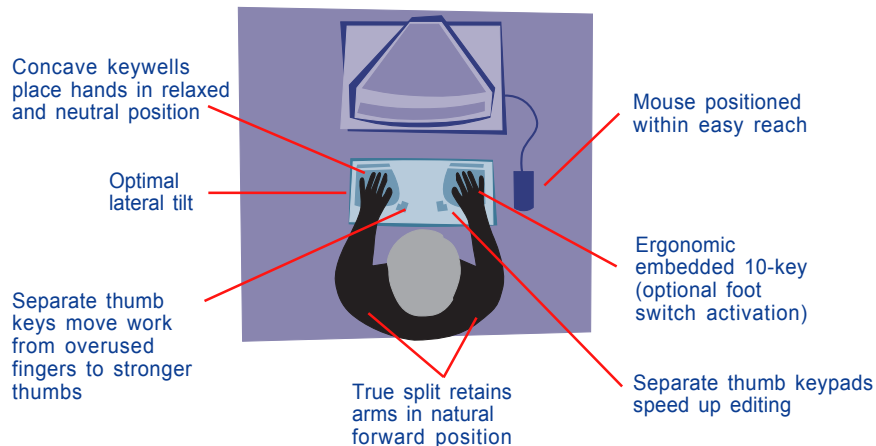
A more Comfortable & Productive Design...

The Kinesis® *Contoured Keyboard* family is based on a unique, patented design that minimizes the pain and strain typists experience from heavy use of conventional computer keyboards. Yet productivity is greater than with any other keyboard, leading to its popularity with programmers and medical transcriptionists.

This ergonomic design resulted from almost two years of research and testing and has proven itself in more than ten years of commercial use. Kinesis contoured keyboards are prescribed by physicians and placed by therapists dealing with keyboard-related overuse injuries.

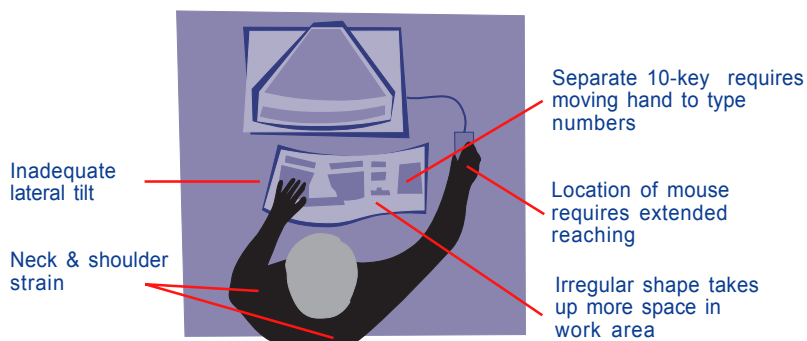
THE KINESIS CONTOURED KEYBOARD

Symmetrical alignment of body, keyboard, and monitor



THE ALTERNATIVE

Awkward alignment of user, keyboard, mouse, and monitor



Keyboard Models...

The Advantage™ USB

(KB500USB(wht), KB500USB(blk), KB500USB/QD(wht))

- Available in White or Black.
- Integrated 2-port USB hub.
- Instantly configure between Mac, Windows and non-Windows PC operating environments. Extra keycaps included.
- On-board programmability to reduce strain and repetitive typing (unlimited remapping: 24, 36, or 48 macros up to 55 characters).
- QWERTY/Dvorak switchable.
- Dual legends (QWERTY/Dvorak) available on QD™ model.
- Supports up to three single action or one triple action foot switch.

The Advantage™ Pro USB

(KB510USB(met))

Special Features Include

- Custom metallic glossy finish with black keys.
- Single action foot switch included.
- Memory locking switch protects users or managers against accidental or unauthorized programming of the keyboard.
- Second memory chip for longer macros (up to 140 characters).

KINESIS
COMPUTER ERGONOMICS

Where unbelievable
productivity and comfort
go hand in hand!

Advantage™ USB Contoured Keyboards



Advantage-White



Advantage-Black



Advantage Pro-Metallic

Specifications

Included Accessories

- Palm pads
- User's Manual
- Adaptation materials

Compatibility

- Available USB port
- Mac USB systems: OS 8.6 and higher
- Windows 98 and higher
- Other operating systems that support USB
- No special drivers required

Dimensions

- Height: 3"
- Width: 16.5"
- Depth front-to-back: 8"
- Frontal slope: 10°
- Lateral tilt: ~20°

Mechanical Key Switches

- Tactile, silent/click selectable
- Operating force: 1.59oz
- Pre-travel: .083 in.
- Travel: .160 in.
- Life: 50 million operations

Warranty, Upgrades & Technical Support

- Two-year limited warranty on keyboards.
- Any recent model can be upgraded to another. Upgrades performed at the Kinesis factory with two-day turnaround. Some models can be field upgraded (please inquire).
- Technical support is free except for normal long distance charges.

Selected Accessories

Foot Switches All contoured keyboards accept single (AC005FS) or triple (AC005TAF) action foot switches. Ideal for 10-key work. First foot switch action activates the 10-key until it is released. The second and third foot switch actions serves as an extra "Shift" key and performs a keypad "Enter". Programmable keyboards allow foot switches to produce any key action or macro.

Solution™ Platform Systems Designed specifically for Kinesis keyboards, our *Solution* platform system incorporates an elegant, ultra thin keyboard tray (26 or 30 inch tray lengths) attached to a 17 inch or 22 inch fully adjustable arm. The platform slides on a ball bearing track and stores conveniently underneath desk when not in use.

Perfit Mouse Optical (USB) The ultimate in comfort! Manufactured by Contour Design, the Perfit mouse is the only pointing device designed to fit your hand. Available in four sizes for the right hand and three sizes for the left hand.

Cirque Cruise Cat™, Smart Cat™ & Easy Cat™ These touchpad pointing devices fit perfectly on the center top portion of contoured keyboards. This is a convenient alternative to locating the touchpad to either side of the keyboard. Available for both Mac & USB systems.

Belkin 4-Port USB Pocket Hub For users who need more than two USB ports. Just connect the Pocket Hub to one of the two USB ports on the Advantage, attach your devices to the Hub and that's it! Attach USB devices through the four ports. Transports easily as a compact, lightweight 4-Port Hub for mobile users. Use printers, hard drives, and scanners with your USB-enabled computer.

*Features & specifications subject to change without notice.



KINESIS CORPORATION

www.ergocanada.com
Toll Free 1 (866) 335-3746 (ERGO)

PO Box 9022
Saskatoon, SK S7K 7E7
Phone: (306) 382-5995
Fax: (306) 382-4995
email: sales@ergocanada.com